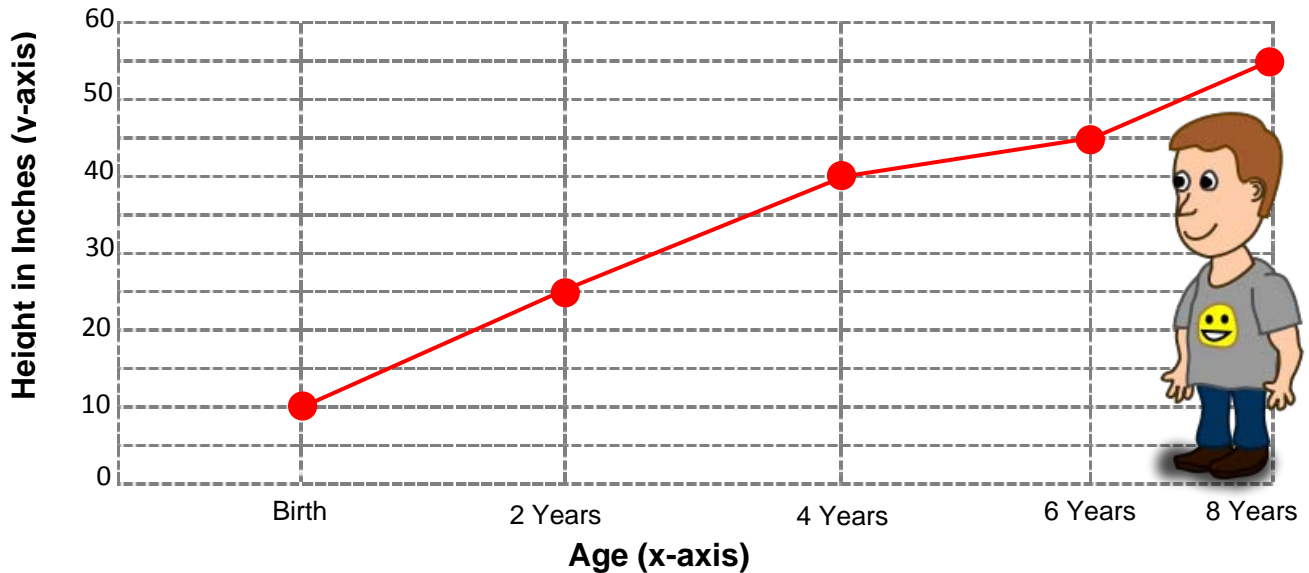


## Height Record Line Graph

Paul's family has kept track of his height. Below is a line graph showing how his height has changed as he aged. Use the graph to answer the questions.

**Paul's Height**



- How tall was Paul when he was born? 1. \_\_\_\_\_
- How much had Paul grown from the time he was born to 2 years old? 2. \_\_\_\_\_
- How tall was Paul when he was 4 years old? 3. \_\_\_\_\_
- How old might Paul be when he was 55 inches tall? 4. \_\_\_\_\_  
 a. 5 years                                      b. 2 years  
 c. 6 years                                      d. 8 years
- About how tall might Paul have been when he was 4 year old? 5. \_\_\_\_\_  
 a. 15 inches                                    b. 40 inches  
 c. 60 inches                                    d. 50 inches

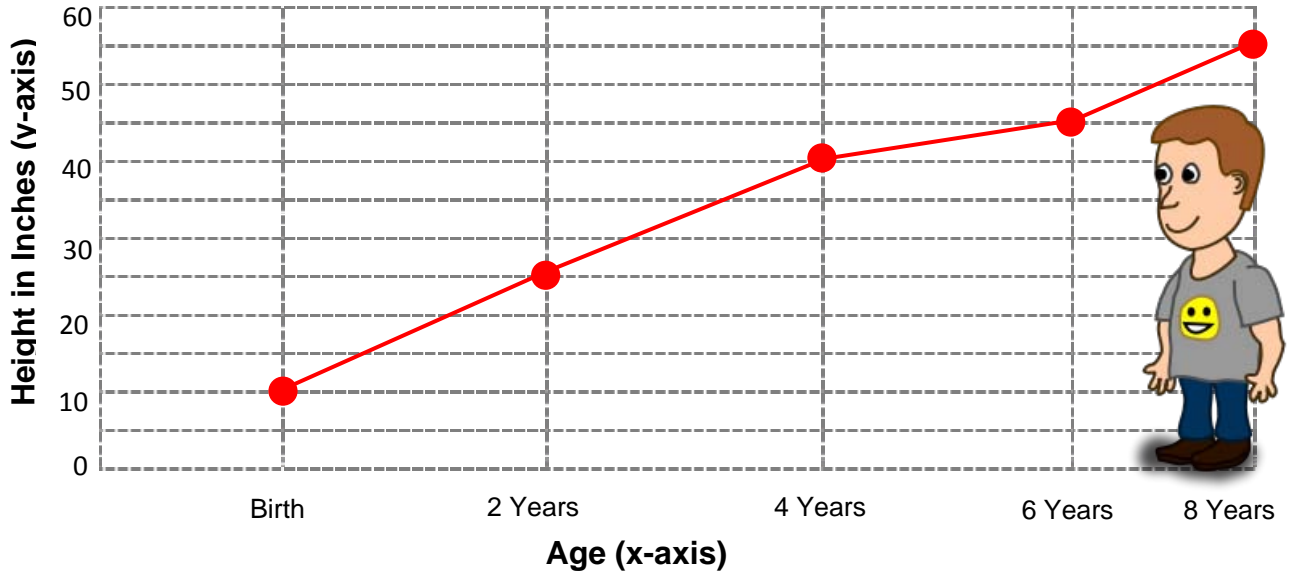
Name \_\_\_\_\_

Score: \_\_\_\_\_

## Height Record Line Graph **ANSWER KEY**

Paul's family has kept track of his height. Below is a line graph showing how his height has changed as he aged. Use the graph to answer the questions.

**Paul's Height**



- How tall was Paul when he was born? 1. **10 inches**
- How much had Paul grown from the time he was born to 2 years old? 2. **15 inches**
- How tall was Paul when he was 4 years old? 3. **40 inches**
- How old might Paul be when he was 55 inches tall? 4. **8 years**  
a. 5 years                      b. 2 years  
c. 6 years                      d. 8 years
- About how tall might Paul have been when he was 4 years old? 5. **40 inches**  
a. 15 inches                      b. 40 inches  
c. 60 inches                      d. 50 inches